

Anti-Myosin Light Chain antibody (N-Term) (STJA0041274)

GENERAL INFORMATION

Product Type	Primary antibodies
Applications	ELISA/WB/ICC
Host / Source	Rabbit
Reactivity	Chicken/Human/Mouse/Rat

PRODUCT PROPERTIES

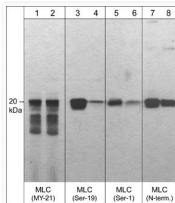
Clonality	Polyclonal
Conjugation	Unconjugated
Purification	Antigen Affinity Purified
Dilution Range	WB 1:1000 ICC 1:200
Formulation	PBS + 1 mg/ml BSA, 0.05% NaN ₃ and 50% glycerol
Isotype	IgG
Molecular Weight	20
Storage Instruction	Storage at -20°C is recommended, as aliquots may be taken without freeze/thawing due to presence of 50% glycerol. Stable for at least 1 year at -20°C.

TARGET INFORMATION

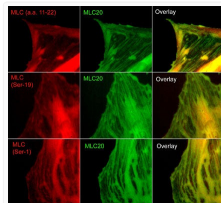
Gene ID	10627
Gene Symbol	MYL12A
UniProt ID	ML12A_HUMAN
Immunogen Region	N-Term
Immunogen Sequence	Human
Specificity	The antibody detects a 20 kDa* band corresponding to the molecular weight of myosin light chain in mouse C2C12, rat PC12, and human A431.

ADDITIONAL INFORMATION

Note STRICTLY FOR FURTHER SCIENTIFIC RESEARCH USE ONLY (RUO). MUST NOT TO BE USED IN DIAGNOSTIC OR THERAPEUTIC APPLICATIONS.



Western blot C2C12 cells MLC20 detection with antibody phosphatase treated and untreated STJA0041274



ICC staining phosphorylated MLC in A7r5 cells using anti-MLC antibody with fluorescent detection STJA0041274