

## Anti-Phospho-Myosin Light Chain-Ser-1 antibody (STJA0041270)

### GENERAL INFORMATION

Product Type	Primary antibodies
Applications	ELISA/WB/ICC
Host / Source	Rabbit
Reactivity	Bovine/Human/Mouse/Rat

### PRODUCT PROPERTIES

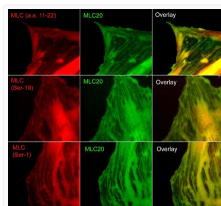
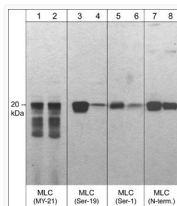
Clonality	Polyclonal
Conjugation	Unconjugated
Purification	Antigen Affinity Purified
Dilution Range	WB 1:1000 ICC 1:100
Formulation	PBS + 1 mg/ml BSA, 0.05% NaN <sub>3</sub> and 50% glycerol
Isotype	IgG
Molecular Weight	20
Storage Instruction	Storage at -20°C is recommended, as aliquots may be taken without freeze/thawing due to presence of 50% glycerol. Stable for at least 1 year at -20°C.

### TARGET INFORMATION

Gene ID	<a href="#">10627</a>
Gene Symbol	<a href="#">MYL12A</a>
UniProt ID	<a href="#">ML12A_HUMAN</a>
Immunogen Sequence	Cow
Specificity	The antibody detects a 20 kDa* band corresponding to the molecular weight of myosin light chain in human A431 treated with EGF or calyculin A. In addition, the antibody detects the 20 kDa myosin light chain in mouse C2C12, rat PC12, and rabbit fibrob

### ADDITIONAL INFORMATION

Note STRICTLY FOR FURTHER SCIENTIFIC RESEARCH USE ONLY (RUO). MUST NOT TO BE USED IN DIAGNOSTIC OR THERAPEUTIC APPLICATIONS.



Western blot MLC antibody detection in C2C12 cells with phosphatase treatment comparison using anti-MLC Ser-1 antibody STJA0041270  
ICC staining phosphorylated MLC in A7r5 cells using anti-MLC Ser-1 antibody STJA0041270