

Anti-Phospho-LIMK1-Ser-323+Ser314 antibody (STJA0041265)

GENERAL INFORMATION

Product Type	Primary antibodies
Applications	ELISA/WB
Host / Source	Rabbit
Reactivity	Human/Mouse/Rat

PRODUCT PROPERTIES

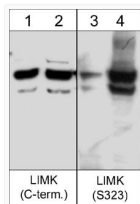
Clonality	Polyclonal
Conjugation	Unconjugated
Purification	Antigen Affinity Purified
Dilution Range	WB 1:1000
Formulation	PBS + 1 mg/ml BSA, 0.05% NaN ₃ and 50% glycerol
Isotype	IgG
Molecular Weight	72
Storage Instruction	Storage at -20°C is recommended, as aliquots may be taken without freeze/thawing due to presence of 50% glycerol. Stable for at least 1 year at -20°C.

TARGET INFORMATION

Gene ID	3984
Gene Symbol	LIMK1
UniProt ID	LIMK1_HUMAN
Immunogen Sequence	Human
Specificity	This antibody was cross-adsorbed to unphosphorylated LIMK1 (Ser-323) peptide then affinity purified using LIMK1 (Ser-323) peptide (without carrier). The antibody detects a protein with the same mobility as anti-LIMK1 (C-terminus, LP1831) in human A43

ADDITIONAL INFORMATION

Note STRICTLY FOR FURTHER SCIENTIFIC RESEARCH USE ONLY (RUO). MUST NOT TO BE USED IN DIAGNOSTIC OR THERAPEUTIC APPLICATIONS.



Western blot LIMK1 detection in human A431 cells with calyculin A treatment STJA0041265