

Anti-GM130 antibody (C-Term) [M342] (STJA0041236)

GENERAL INFORMATION

Product Type	Primary antibodies
Applications	ELISA/WB/ICC
Host / Source	Mouse
Reactivity	Human/Mouse/Rat

PRODUCT PROPERTIES

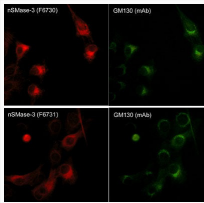
Clonality	Monoclonal
Conjugation	Unconjugated
Purification	Protein A Purified
Dilution Range	WB 1:500 ICC 1:50
Formulation	PBS + 1 mg/ml BSA, 0.05% NaN ₃ and 50% glycerol
Isotype	IgG1
Molecular Weight	130
Storage Instruction	Storage at-20°C is recommended, as aliquots may be taken without freeze/thawing due to presence of 50% glycerol. Stable for at least 1 year at-20°C.

TARGET INFORMATION

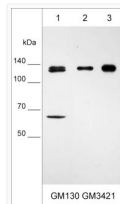
Gene ID	2801
Gene Symbol	GOLGA2
UniProt ID	GOGA2_HUMAN
Immunogen Region	C-Term
Immunogen Sequence	Human
Specificity	This antibody detects a 130 kDa ⁺ protein corresponding to the apparent molecular mass of GM130 on SDS-PAGE immunoblots of mouse C2C12 cells. In immunocytochemistry, anti-GM130 specifically stains Golgi in mouse C2C12 cells.

ADDITIONAL INFORMATION

Note STRICTLY FOR FURTHER SCIENTIFIC RESEARCH USE ONLY (RUO). MUST NOT TO BE USED IN DIAGNOSTIC OR THERAPEUTIC APPLICATIONS.



ICC staining GM130 in C2C12 cells using antibody with Cy2-Cy3 detection STJA0041236



Western blot WB GM130 expression in MCF7A549 and MDA-MB-231 cells using antibody STJA0041236