

Anti-Phospho-EB3-Ser-176 antibody (STJA0041217)

GENERAL INFORMATION

| | |
|---------------|--------------------|
| Product Type | Primary antibodies |
| Applications | ELISA/WB |
| Host / Source | Rabbit |
| Reactivity | Human/Mouse/Rat |

PRODUCT PROPERTIES

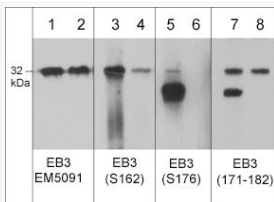
| | |
|---------------------|--|
| Clonality | Polyclonal |
| Conjugation | Unconjugated |
| Purification | Antigen Affinity Purified |
| Dilution Range | WB 1:500 |
| Formulation | PBS + 1 mg/ml BSA, 0.05% NaN ₃ and 50% glycerol |
| Isotype | IgG |
| Molecular Weight | 32 |
| Storage Instruction | Storage at -20°C is recommended, as aliquots may be taken without freeze/thawing due to presence of 50% glycerol. Stable for at least 1 year at -20°C. |

TARGET INFORMATION

| | |
|--------------------|---|
| Gene ID | 22924 |
| Gene Symbol | MAPRE3 |
| UniProt ID | MARE3_HUMAN |
| Immunogen Sequence | Human |
| Specificity | This antibody was cross-absorbed to unphospho-EB3 (Ser-176), before affinity purification using phospho-EB3 (Ser-176) peptide (without carrier). The antibody detects a 32 kDa* protein corresponding to the apparent molecular mass of phosphorylated EB |

ADDITIONAL INFORMATION

Note STRICTLY FOR FURTHER SCIENTIFIC RESEARCH USE ONLY (RUO). MUST NOT TO BE USED IN DIAGNOSTIC OR THERAPEUTIC APPLICATIONS.



Western blot analysis mouse brain tissue with and without lambda phosphatase treatment
 STJA0041217