

Anti-EB3 antibody (Central Region) (STJA0041216)

GENERAL INFORMATION

Product Type	Primary antibodies
Applications	ELISA/WB
Host / Source	Rabbit
Reactivity	Human/Mouse/Rat

PRODUCT PROPERTIES

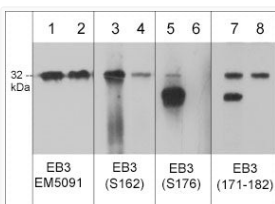
Clonality	Polyclonal
Conjugation	Unconjugated
Purification	Antigen Affinity Purified
Dilution Range	WB 1:1000
Formulation	PBS + 1 mg/ml BSA, 0.05% NaN ₃ and 50% glycerol
Isotype	IgG
Molecular Weight	32
Storage Instruction	Storage at -20°C is recommended, as aliquots may be taken without freeze/thawing due to presence of 50% glycerol. Stable for at least 1 year at -20°C.

TARGET INFORMATION

Gene ID	22924
Gene Symbol	MAPRE3
UniProt ID	MARE3_HUMAN
Immunogen Region	Central Region
Immunogen Sequence	Human
Specificity	The antibody detects a 32 kDa* protein corresponding to the apparent molecular mass of EB3 on SDS-PAGE immunoblots of mouse brain and human recombinant full length EB3 protein.

ADDITIONAL INFORMATION

Note STRICTLY FOR FURTHER SCIENTIFIC RESEARCH USE ONLY (RUO). MUST NOT TO BE USED IN DIAGNOSTIC OR THERAPEUTIC APPLICATIONS.



Western blot analysis mouse brain tissue using anti-EB3 antibody with phosphatase treatment
 STJA0041216