

Anti-Phospho-eEF2K-Ser-500 antibody (STJA0041213)

GENERAL INFORMATION

Product Type	Primary antibodies
Applications	ELISA/WB
Host / Source	Rabbit
Reactivity	Human/Mouse/Rat

PRODUCT PROPERTIES

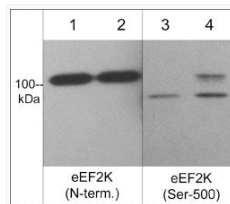
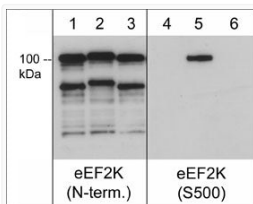
Clonality	Polyclonal
Conjugation	Unconjugated
Purification	Antigen Affinity Purified
Dilution Range	WB 1:1000
Formulation	PBS + 1 mg/ml BSA, 0.05% NaN ₃ and 50% glycerol
Isotype	IgG
Molecular Weight	105
Storage Instruction	Storage at -20°C is recommended, as aliquots may be taken without freeze/thawing due to presence of 50% glycerol. Stable for at least 1 year at -20°C.

TARGET INFORMATION

Gene ID	29904
Gene Symbol	EEF2K
UniProt ID	EF2K_HUMAN
Immunogen Sequence	Human
Specificity	The antibody detects a 105 kDa* protein corresponding to the molecular mass of eEF2K on SDS-PAGE immunoblots of human recombinant eEF2K autophosphorylated in the presence of Ca ²⁺ and Calmodulin. This reactivity is removed after lambda phosphatase tre

ADDITIONAL INFORMATION

Note **STRICTLY FOR FURTHER SCIENTIFIC RESEARCH USE ONLY (RUO). MUST NOT TO BE USED IN DIAGNOSTIC OR THERAPEUTIC APPLICATIONS.**



Western blot recombinant human eEF2K phosphorylation states with anti-eEF2K antibodies STJA0041213
 WB analysis C2C12 cells treated with calyculin A probed with anti-eEF2K antibodies STJA0041213