

## Anti-Phospho-eEF2K-Ser-359 antibody (STJA0041212)

### GENERAL INFORMATION

Product Type	Primary antibodies
Applications	ELISA/WB
Host / Source	Rabbit
Reactivity	Human/Mouse/Rat

### PRODUCT PROPERTIES

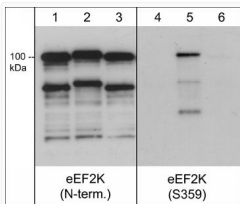
Clonality	Polyclonal
Conjugation	Unconjugated
Purification	Antigen Affinity Purified
Dilution Range	WB 1:1000
Formulation	PBS + 1 mg/ml BSA, 0.05% Na <sub>3</sub> N and 50% glycerol
Isotype	IgG
Molecular Weight	105
Storage Instruction	Storage at -20°C is recommended, as aliquots may be taken without freeze/thawing due to presence of 50% glycerol. Stable for at least 1 year at -20°C.

### TARGET INFORMATION

Gene ID	<a href="#">29904</a>
Gene Symbol	<a href="#">EEF2K</a>
UniProt ID	<a href="#">EF2K_HUMAN</a>
Immunogen Sequence	Human
Specificity	The antibody detects a 105 kDa* protein corresponding to the molecular mass of eEF2K on SDS-PAGE immunoblots of human recombinant eEF2K autophosphorylated in the presence of Ca <sup>2+</sup> and Calmodulin. This reactivity is removed after lambda phosphatase tre

### ADDITIONAL INFORMATION

Note STRICTLY FOR FURTHER SCIENTIFIC RESEARCH USE ONLY (RUO). MUST NOT TO BE USED IN DIAGNOSTIC OR THERAPEUTIC APPLICATIONS.



Western blot eEF2K phosphorylation at Ser-359 with p38 kinase treatment STJA0041212