

Anti-Phospho-EGFR-Ser-967 antibody (STJA0041201)

GENERAL INFORMATION

Product Type	Primary antibodies
Applications	ELISA/WB/ICC
Host / Source	Rabbit
Reactivity	Human/Mouse/Rat

PRODUCT PROPERTIES

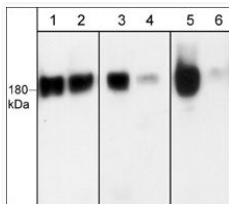
Clonality	Polyclonal
Conjugation	Unconjugated
Purification	Antigen Affinity Purified
Dilution Range	WB 1:1000 ICC 1:200
Formulation	PBS + 1 mg/ml BSA, 0.05% NaN ₃ and 50% glycerol
Isotype	IgG
Molecular Weight	180
Storage Instruction	Storage at -20°C is recommended, as aliquots may be taken without freeze/thawing due to presence of 50% glycerol. Stable for at least 1 year at -20°C.

TARGET INFORMATION

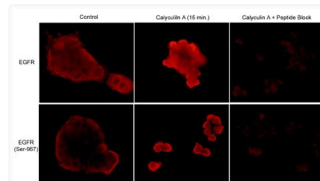
Gene ID	1956
Gene Symbol	EGFR
UniProt ID	EGFR_HUMAN
Immunogen Sequence	Human
Specificity	This antibody was cross-adsorbed to unphosphorylated EGFR (Ser-967) coupled to agarose then affinity purified using phospho-EGFR (Ser-967) peptide (without carrier). The antibody detects a 180 kDa* protein on SDS-PAGE immunoblots of human A431 cells

ADDITIONAL INFORMATION

Note STRICTLY FOR FURTHER SCIENTIFIC RESEARCH USE ONLY (RUO). MUST NOT TO BE USED IN DIAGNOSTIC OR THERAPEUTIC APPLICATIONS.



Western blot A431 cells EGFR phosphorylation detection using antibody STJA0041201



ICC staining in A431 cells EGFR and phospho-EGFR Ser-967 antibody labeling STJA0041201