

Anti-EphA4 antibody (N-Term) [M280] (STJA0041192)

GENERAL INFORMATION

Product Type	Primary antibodies
Applications	ELISA/WB
Host / Source	Mouse
Reactivity	Chicken/Human/Mouse/Rat

PRODUCT PROPERTIES

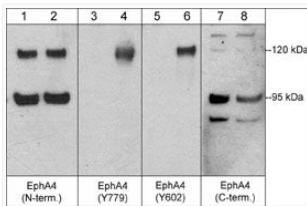
Clonality	Monoclonal
Conjugation	Unconjugated
Purification	Protein A Purified
Dilution Range	WB 1:1000
Formulation	PBS + 1 mg/ml BSA, 0.05% NaN ₃ and 50% glycerol
Isotype	IgG1
Molecular Weight	95/120
Storage Instruction	Storage at -20°C is recommended, as aliquots may be taken without freeze/thawing due to presence of 50% glycerol. Stable for at least 1 year at -20°C.

TARGET INFORMATION

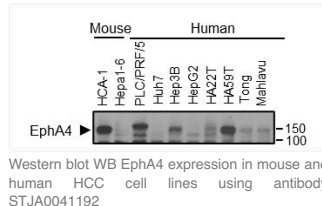
Gene ID	2043
Gene Symbol	EPHA4
UniProt ID	EPHA4_HUMAN
Immunogen Region	N-Term
Immunogen Sequence	Human
Specificity	This antibody detects 95 and 120 kDa* bands corresponding to EphA4 in Western blots of HUVEC cells and a 120 kDa band in mouse brain tissue.

ADDITIONAL INFORMATION

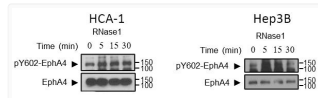
Note STRICTLY FOR FURTHER SCIENTIFIC RESEARCH USE ONLY (RUO). MUST NOT TO BE USED IN DIAGNOSTIC OR THERAPEUTIC APPLICATIONS.



Western blot anti-EphA4 antibody phosphorylation in endothelial cells STJA0041192



Western blot WB EphA4 expression in mouse and human HCC cell lines using antibody STJA0041192



Western blot EphA4 detection with antibody in mouse HCA-1 and human Hep3B cells STJA0041192