

Anti-EphA2 M088 Antibody antibody (ECD) [M088] (STJA0041188)

GENERAL INFORMATION

Product Type	Primary antibodies
Applications	ELISA/ICC/IP
Host / Source	Mouse
Reactivity	Human

PRODUCT PROPERTIES

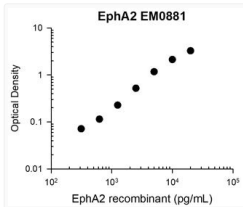
Clonality	Monoclonal
Conjugation	Unconjugated
Purification	Protein G Purified
Dilution Range	ICC 1:200 IP 1:100
Formulation	PBS + 1 mg/ml BSA, 0.05% NaN ₃ and 50% glycerol
Isotype	IgG1
Molecular Weight	125
Storage Instruction	Storage at -20°C is recommended, as aliquots may be taken without freeze/thawing due to presence of 50% glycerol. Stable for at least 1 year at -20°C.

TARGET INFORMATION

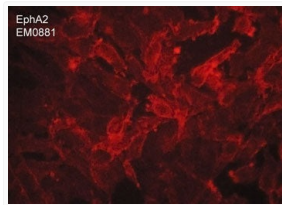
Gene ID	1969
Gene Symbol	EPHA2
UniProt ID	EPHA2_HUMAN
Immunogen Region	ECD
Immunogen Sequence	Human
Specificity	Clone M088 mouse monoclonal antibody detects native human EphA2, as well as aldehyde-fixed EphA2. The antibody works for staining in immunocytochemistry, capture and detection in ELISA, and native immunoprecipitation assays.

ADDITIONAL INFORMATION

Note STRICTLY FOR FURTHER SCIENTIFIC RESEARCH USE ONLY (RUO). MUST NOT TO BE USED IN DIAGNOSTIC OR THERAPEUTIC APPLICATIONS.



ELISA standard curve for anti-EphA2 antibody capturing human recombinant EphA2 protein STJA0041188



ICC staining EphA2 in MDA-MB-231 breast carcinoma cells using antibody with DyLight 594 STJA0041188