

Anti-EphA2 M060 Antibody antibody (ECD) [M060] (STJA0041187)

GENERAL INFORMATION

Product Type	Primary antibodies
Applications	ELISA/WB-Nat/ICC
Host / Source	Mouse
Reactivity	Human

PRODUCT PROPERTIES

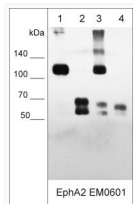
Clonality	Monoclonal
Conjugation	Unconjugated
Purification	Protein G Purified
Dilution Range	WB 1:1000 ICC 1:200
Formulation	PBS + 1 mg/ml BSA, 0.05% NaN ₃ and 50% glycerol
Isotype	IgG1
Molecular Weight	125
Storage Instruction	Storage at -20°C is recommended, as aliquots may be taken without freeze/thawing due to presence of 50% glycerol. Stable for at least 1 year at -20°C.

TARGET INFORMATION

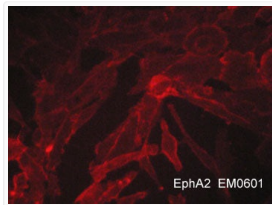
Gene ID	1969
Gene Symbol	EPHA2
UniProt ID	EPHA2_HUMAN
Immunogen Region	ECD
Immunogen Sequence	Human
Specificity	Clone M060 mouse monoclonal antibody detects a 125kDa* protein on SDS-PAGE Native" immunoblots of human NCI-H2052 and MDA-MB-231 carcinomas, as well as the EphA2 C-terminal 60 kDa fragment in human A431 and A549. The antibody detects native EphA2, a

ADDITIONAL INFORMATION

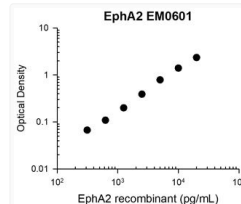
Note STRICTLY FOR FURTHER SCIENTIFIC RESEARCH USE ONLY (RUO). MUST NOT TO BE USED IN DIAGNOSTIC OR THERAPEUTIC APPLICATIONS.



Western blot EphA2 detection in human carcinoma cell lines using antibody STJA0041187



ICC staining EphA2 in MDA-MB-231 breast carcinoma cells using antibody with DyLight 594 STJA0041187



ELISA standard curve for anti-EphA2 antibody capturing human recombinant EphA2 STJA0041187