

Anti-Phospho-Dok1-Tyr-362 antibody [WB, E] (STJA0041174)

GENERAL INFORMATION

Product Type	Primary antibodies
Applications	ELISA/WB
Host / Source	Rabbit
Reactivity	Human/Mouse/Rat

PRODUCT PROPERTIES

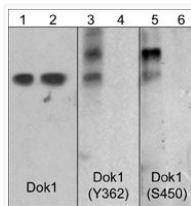
Clonality	Polyclonal
Conjugation	Unconjugated
Purification	Antigen Affinity Purified
Dilution Range	WB 1:1000
Formulation	PBS + 1 mg/ml BSA, 0.05% Na ₃ N and 50% glycerol
Isotype	IgG
Molecular Weight	62
Storage Instruction	Storage at -20°C is recommended, as aliquots may be taken without freeze/thawing due to presence of 50% glycerol. Stable for at least 1 year at -20°C.

TARGET INFORMATION

Gene ID	1796
Gene Symbol	DOK1
UniProt ID	DOK1_HUMAN
Immunogen Sequence	Human
Specificity	This antibody was cross-adsorbed to a phosphotyrosine peptide before affinity purification using phospho-Dok1 (Tyr-362) peptide. The purified antibody detects a band at 62 kDa [*] corresponding to Dok1 in western blots of human Jurkat cells, but does not

ADDITIONAL INFORMATION

Note STRICTLY FOR FURTHER SCIENTIFIC RESEARCH USE ONLY (RUO). MUST NOT TO BE USED IN DIAGNOSTIC OR THERAPEUTIC APPLICATIONS.



Western blot Dok1 phosphorylation in Jurkat cells with phosphatase treatments STJA0041174