

Anti-Phospho-Crk II-Tyr-251 antibody (STJA0041160)

GENERAL INFORMATION

Product Type	Primary antibodies
Applications	ELISA/WB/IHC
Host / Source	Rabbit
Reactivity	Chicken/Human/Mouse/Rat/Xenopus

PRODUCT PROPERTIES

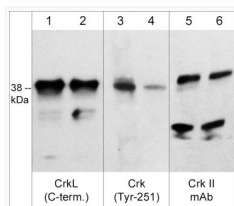
Clonality	Polyclonal
Conjugation	Unconjugated
Purification	Antigen Affinity Purified
Dilution Range	WB 1:1000 ICC 1:100
Formulation	PBS + 1 mg/ml BSA, 0.05% NaN ₃ and 50% glycerol
Isotype	IgG
Molecular Weight	38
Storage Instruction	Storage at -20°C is recommended, as aliquots may be taken without freeze/thawing due to presence of 50% glycerol. Stable for at least 1 year at -20°C.

TARGET INFORMATION

Gene ID	1398
Gene Symbol	CRK
UniProt ID	CRK_HUMAN
Immunogen Sequence	Human
Specificity	The antibody detects a 38 and 40 kDa* proteins corresponding to the molecular mass of Crk II and CrkL on SDS-PAGE immunoblots of human K562 cells stimulated with pervanadate and A431 cells stimulated with EGF. This reactivity is not observed after ak

ADDITIONAL INFORMATION

Note STRICTLY FOR FURTHER SCIENTIFIC RESEARCH USE ONLY (RUO). MUST NOT TO BE USED IN DIAGNOSTIC OR THERAPEUTIC APPLICATIONS.



Western blot Crk Tyr-251 phospho-specific antibody detection in K562 cells STJA0041160