

Anti-Phospho-CRMP2-Thr-555 antibody (STJA0041152)

GENERAL INFORMATION

Product Type	Primary antibodies
Applications	ELISA/WB/ICC
Host / Source	Rabbit
Reactivity	Human/Mouse/Rat

PRODUCT PROPERTIES

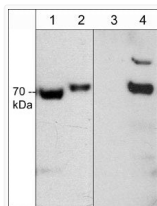
Clonality	Polyclonal
Conjugation	Unconjugated
Purification	Antigen Affinity Purified
Dilution Range	WB 1:1000 ICC 1:200
Formulation	PBS + 1 mg/ml BSA, 0.05% NaN ₃ and 50% glycerol
Isotype	IgG
Molecular Weight	70
Storage Instruction	Storage at -20°C is recommended, as aliquots may be taken without freeze/thawing due to presence of 50% glycerol. Stable for at least 1 year at -20°C.

TARGET INFORMATION

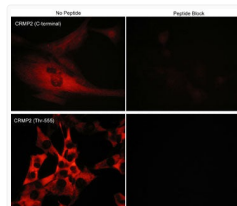
Gene ID	1808
Gene Symbol	DPYSL2
UniProt ID	DPYL2_HUMAN
Immunogen Sequence	Human
Specificity	This antibody was cross-adsorbed to unphosphorylated CRMP2 (Thr-555) before affinity purification using phospho-CRMP2 (Thr-555) peptide (without carrier). The antibody detects a 70 kDa* protein corresponding to CRMP2 on immunoblots of rat PC12 or mou

ADDITIONAL INFORMATION

Note STRICTLY FOR FURTHER SCIENTIFIC RESEARCH USE ONLY (RUO). MUST NOT TO BE USED IN DIAGNOSTIC OR THERAPEUTIC APPLICATIONS.



western blot CRMP2 detection in rat PC12 cells with calyculin A treatment STJA0041152



ICC staining phosphorylated CRMP2 in mouse C2C12 cells using antibody with blocking peptide control STJA0041152