

## Anti-Phospho-Cofilin 1-Ser-3 antibody (STJA0041140)

### GENERAL INFORMATION

Product Type	Primary antibodies
Applications	ELISA/WB/ICC
Host / Source	Rabbit
Reactivity	Chicken/Human/Mouse/Rat

### PRODUCT PROPERTIES

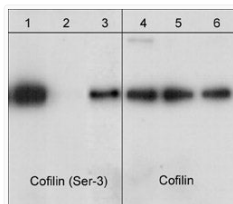
Clonality	Polyclonal
Conjugation	Unconjugated
Purification	Antigen Affinity Purified
Dilution Range	WB 1:1000 ICC 1:50
Formulation	PBS + 1 mg/ml BSA, 0.05% NaN <sub>3</sub> and 50% glycerol
Isotype	IgG
Molecular Weight	19
Storage Instruction	Storage at -20°C is recommended, as aliquots may be taken without freeze/thawing due to presence of 50% glycerol. Stable for at least 1 year at -20°C.

### TARGET INFORMATION

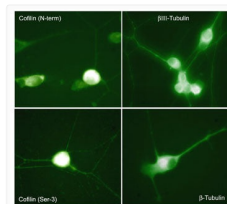
Gene ID	<a href="#">1072</a>
Gene Symbol	<a href="#">CFL1</a>
UniProt ID	<a href="#">COF1_HUMAN</a>
Immunogen Sequence	Human
Specificity	This antibody was cross-adsorbed to unphosphorylated Cofilin 1 peptide then affinity purified using phospho-Cofilin 1 (Ser-3) peptide (without carrier). The antibody detects a 19 kDa* protein corresponding to the molecular mass of phosphorylated Cofilin

### ADDITIONAL INFORMATION

Note STRICTLY FOR FURTHER SCIENTIFIC RESEARCH USE ONLY (RUO). MUST NOT TO BE USED IN DIAGNOSTIC OR THERAPEUTIC APPLICATIONS.



Western blot cofilin phosphorylation in Jurkat cells with phosphatase treatment STJA0041140



ICC labeling chick dorsal root ganglion neurons using anti-Cofilin Ser-3 antibody STJA0041140