

Anti-CLASP2 antibody (N-Term) [KT68] (STJA0041129)

GENERAL INFORMATION

Product Type	Primary antibodies
Applications	ELISA/WB/ICC
Host / Source	Rat
Reactivity	Human/Mouse/Rat

PRODUCT PROPERTIES

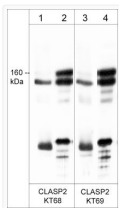
Clonality	Monoclonal
Conjugation	Unconjugated
Purification	Protein G Purified
Dilution Range	WB 1:1000 ICC 1:200
Formulation	PBS + 0.05% NaN3
Isotype	IgG2b
Molecular Weight	160
Storage Instruction	Recommended that the undiluted antibody be aliquoted into smaller working volumes (10-30 uL/vial depending on usage) upon arrival and stored long term at -20°C C or -80°C C, while keeping a working aliquot stored at 4°C C for short term. Avoid freeze/t

TARGET INFORMATION

Gene ID	76499
Gene Symbol	Clasp2
UniProt ID	CLAP2_MOUSE
Immunogen Region	N-Term
Immunogen Sequence	Mouse
Specificity	The antibody detects a 160 kDa* doublet corresponding to the molecular mass of CLASP2 on SDS-PAGE immunoblots of human HeLa, mouse brain, and rat PC12 cells. The antibody also detects CLASP2 by immunocytochemistry in HeLa and A431 cells.

ADDITIONAL INFORMATION

Note STRICTLY FOR FURTHER SCIENTIFIC RESEARCH USE ONLY (RUO). MUST NOT TO BE USED IN DIAGNOSTIC OR THERAPEUTIC APPLICATIONS.



Western blot anti-CLASP2 antibody detection in mouse brain and rat PC12 cells STJA0041129