

## Anti-CD244/2B4/SLAMF4 M085 Antibody antibody (ECD) [M085] (STJA0041105)

### GENERAL INFORMATION

Product Type	Primary antibodies
Applications	ELISA/WB-Nat/ICC/IP
Host / Source	Mouse
Reactivity	Human

### PRODUCT PROPERTIES

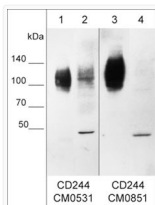
Clonality	Monoclonal
Conjugation	Unconjugated
Purification	Protein G Purified
Dilution Range	WB 1:1000 ICC 1:200 IP 1:100
Formulation	PBS + 1 mg/ml BSA, 0.05% Na <sub>3</sub> N and 50% glycerol
Isotype	IgG1
Molecular Weight	110
Storage Instruction	Storage at -20°C is recommended, as aliquots may be taken without freeze/thawing due to presence of 50% glycerol. Stable for at least 1 year at -20°C.

### TARGET INFORMATION

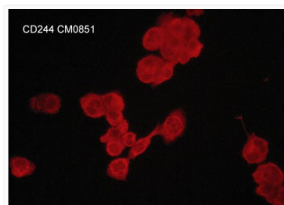
Gene ID	<a href="#">51744</a>
Gene Symbol	<a href="#">CD244</a>
UniProt ID	<a href="#">CD244_HUMAN</a>
Immunogen Region	ECD
Immunogen Sequence	Human
Specificity	Clone M085 mouse monoclonal antibody detects a 110 kDa* protein on SDS-PAGE Native <sup>®</sup> immunoblots of human THP1 monocytes. The antibody detects only the native CD244 protein, and the aldehyde-fixed CD244 protein. The antibody works for native western b

### ADDITIONAL INFORMATION

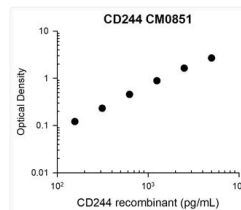
Note STRICTLY FOR FURTHER SCIENTIFIC RESEARCH USE ONLY (RUO). MUST NOT TO BE USED IN DIAGNOSTIC OR THERAPEUTIC APPLICATIONS.



Western blot anti-CD244-2B4-SLAMF4 antibody detection in THP-1 monocyte lysates STJA0041105



ICC staining CD244 in human THP-1 cells using antibody with DyLight 594 detection STJA0041105



ELISA standard curve for anti-CD244 antibody capturing human recombinant CD244 STJA0041105