

Anti-CD147/Emmprin/Basigin antibody (ECD) [M052] (STJA0041101)

GENERAL INFORMATION

Product Type	Primary antibodies
Applications	ELISA/WB
Host / Source	Mouse
Reactivity	Human

PRODUCT PROPERTIES

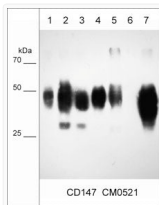
Clonality	Monoclonal
Conjugation	Unconjugated
Purification	Protein G Purified
Dilution Range	WB 1:2000
Formulation	PBS + 1 mg/ml BSA, 0.05% NaN ₃ and 50% glycerol
Isotype	IgG1
Molecular Weight	38-58
Storage Instruction	Storage at -20°C is recommended, as aliquots may be taken without freeze/thawing due to presence of 50% glycerol. Stable for at least 1 year at -20°C.

TARGET INFORMATION

Gene ID	682
Gene Symbol	BSG
UniProt ID	BASI_HUMAN
Immunogen Region	ECD
Immunogen Sequence	Human
Specificity	Clone M052 mouse monoclonal antibody detects a 38-58 kDa* protein on SDS-PAGE immunoblots of human SK-MES1, MDA-MB-231, MeWo, A431, LNCaP, and NCI-H1915 cells, as well as human brain tissues. The antibody works for western blot and ELISA detection of

ADDITIONAL INFORMATION

Note STRICTLY FOR FURTHER SCIENTIFIC RESEARCH USE ONLY (RUO). MUST NOT TO BE USED IN DIAGNOSTIC OR THERAPEUTIC APPLICATIONS.



Western blot CD147 detection across multiple cancer cell lines using antibody STJA0041101