

Anti-CD147/Emmprin/Basigin antibody (ECD) [M036] (STJA0041097)

GENERAL INFORMATION

Product Type	Primary antibodies
Applications	ELISA/WB/ICC/IP
Host / Source	Mouse
Reactivity	Human

PRODUCT PROPERTIES

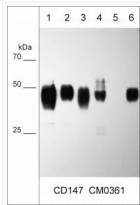
Clonality	Monoclonal
Conjugation	Unconjugated
Purification	Protein G Purified
Dilution Range	WB 1:2000 ICC 1:100 IP 1:100
Formulation	PBS + 1 mg/ml BSA, 0.05% Na ₃ N and 50% glycerol
Isotype	IgG2a
Molecular Weight	38-58
Storage Instruction	Storage at -20°C is recommended, as aliquots may be taken without freeze/thawing due to presence of 50% glycerol. Stable for at least 1 year at -20°C.

TARGET INFORMATION

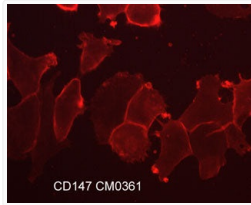
Gene ID	682
Gene Symbol	BSG
UniProt ID	BASI_HUMAN
Immunogen Region	ECD
Immunogen Sequence	Human
Specificity	Clone M036 mouse monoclonal antibody detects a 38-58 kDa* protein on SDS-PAGE immunoblots of human BEAS, NCIH28, NCI-H1299, LNCaP, and A431 cells, as well as human brain tissues. The antibody works for western blot, immunoprecipitation, ELISA capture

ADDITIONAL INFORMATION

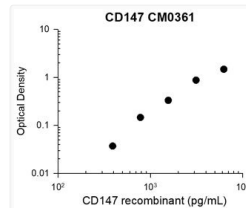
Note STRICTLY FOR FURTHER SCIENTIFIC RESEARCH USE ONLY (RUO). MUST NOT TO BE USED IN DIAGNOSTIC OR THERAPEUTIC APPLICATIONS.



Western blot CD147 detection with antibody across six cell lysate lanes STJA0041097



ICC staining CD147 in NCI-H1915 lung carcinoma cells using antibody STJA0041097



Standard curve for anti-CD147 antibody in ELISA detection recombinant human CD147 STJA0041097