

Anti-Phospho-AIFM1-Ser-116 antibody (STJA0041080)

GENERAL INFORMATION

| | |
|---------------|--------------------|
| Product Type | Primary antibodies |
| Applications | ELISA/WB |
| Host / Source | Rabbit |
| Reactivity | Human |

PRODUCT PROPERTIES

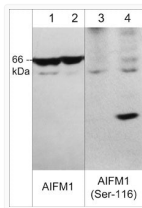
| | |
|---------------------|--------------------------------------------------------------------------------------------------------------------------------------------------------|
| Clonality | Polyclonal |
| Conjugation | Unconjugated |
| Purification | Antigen Affinity Purified |
| Dilution Range | WB 1:1000 |
| Formulation | PBS + 1 mg/ml BSA, 0.05% NaN ₃ and 50% glycerol |
| Isotype | IgG |
| Molecular Weight | 57/62/66 |
| Storage Instruction | Storage at -20°C is recommended, as aliquots may be taken without freeze/thawing due to presence of 50% glycerol. Stable for at least 1 year at -20°C. |

TARGET INFORMATION

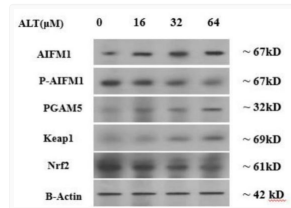
| | |
|--------------------|------------------------------------------------------------------------------------------------------------------------------------------------------------------------------------------------------------------------------------------------------------|
| Gene ID | 9131 |
| Gene Symbol | AIFM1 |
| UniProt ID | AIFM1_HUMAN |
| Immunogen Sequence | Human |
| Specificity | The antibody was cross adsorbed to unphosphorylated AIFM1 (Ser-116) peptide before affinity purification using phospho-AIFM1 (Ser-116) peptide. This antibody antibody detects a triplet at 66, 62, and 57 kDa* protein on SDS-PAGE immunoblots of human J |

ADDITIONAL INFORMATION

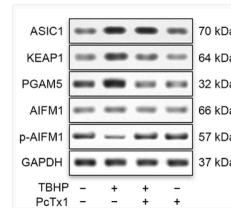
Note STRICTLY FOR FURTHER SCIENTIFIC RESEARCH USE ONLY (RUO). MUST NOT TO BE USED IN DIAGNOSTIC OR THERAPEUTIC APPLICATIONS.



WB analysis Jurkat cells AIFM1 phospho-specific antibody detection STJA0041080



Western blot P-AIFM1Ser-116 detection using antibody in SKOV-3 cells STJA0041080



Western blot ASIC1KEAP1PGAM5and phospho-AIFM1 detection using antibody STJA0041080