

Anti-Phospho-Arpc1b/p41-Arc-Thr-21 antibody (STJA0041075)

GENERAL INFORMATION

Product Type	Primary antibodies
Applications	ELISA/WB
Host / Source	Rabbit
Reactivity	Chicken/Human/Mouse/Rat/Xenopus

PRODUCT PROPERTIES

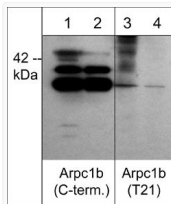
Clonality	Polyclonal
Conjugation	Unconjugated
Purification	Antigen Affinity Purified
Dilution Range	WB 1:500
Formulation	PBS + 1 mg/ml BSA, 0.05% NaN ₃ and 50% glycerol
Isotype	IgG
Molecular Weight	41
Storage Instruction	Storage at -20°C is recommended, as aliquots may be taken without freeze/thawing due to presence of 50% glycerol. Stable for at least 1 year at -20°C.

TARGET INFORMATION

Gene ID	10095
Gene Symbol	ARPC1B
UniProt ID	ARPC1B_HUMAN
Immunogen Sequence	Human
Specificity	The antibody detects a 41 kDa* protein corresponding to the molecular mass of Arpc1b on SDS-PAGE immunoblots of human A431 and mouse C2C12 treated with calyculin A. This reactivity is removed with lambda phosphatase treatment.

ADDITIONAL INFORMATION

Note STRICTLY FOR FURTHER SCIENTIFIC RESEARCH USE ONLY (RUO). MUST NOT TO BE USED IN DIAGNOSTIC OR THERAPEUTIC APPLICATIONS.



Western blot Arpc1b phosphorylation in A431 cells with phosphatase treatment comparison
 STJA0041075