

Anti-Phospho-ATM-Ser-1981 antibody [M366] (STJA0041054)

GENERAL INFORMATION

Product Type	Primary antibodies
Applications	ELISA/WB/IP/ICC
Host / Source	Mouse
Reactivity	Human/Mouse/Rat

PRODUCT PROPERTIES

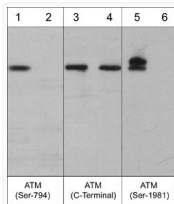
Clonality	Monoclonal
Conjugation	Unconjugated
Purification	Protein A Purified
Dilution Range	WB 1:1000 ICC 1:200 IP 1:100
Formulation	PBS + 1 mg/ml BSA, 0.05% Na ₃ N and 50% glycerol
Isotype	IgG1
Molecular Weight	370
Storage Instruction	Storage at -20°C is recommended, as aliquots may be taken without freeze/thawing due to presence of 50% glycerol. Stable for at least 1 year at -20°C.

TARGET INFORMATION

Gene ID	472
Gene Symbol	ATM
UniProt ID	ATM_HUMAN
Immunogen Sequence	Human
Specificity	This antibody detects a 370 kDa* protein corresponding to the molecular mass of ATM on SDS-PAGE immunoblots of calyculin A treated human A431 and Jurkat Cells, but is not observed in control cells.

ADDITIONAL INFORMATION

Note STRICTLY FOR FURTHER SCIENTIFIC RESEARCH USE ONLY (RUO). MUST NOT TO BE USED IN DIAGNOSTIC OR THERAPEUTIC APPLICATIONS.



Western blot ATM phosphorylation in A431 cells with phosphatase treatment comparison
ICC labeling ATM Ser-1981 phosphorylation in A431 cells using antibody STJA0041054

