

Anti-c-Abl antibody (C-Term) [M209] (STJA0041050)

GENERAL INFORMATION

Product Type	Primary antibodies
Applications	ELISA/WB
Host / Source	Mouse
Reactivity	Human/Mouse/Rat

PRODUCT PROPERTIES

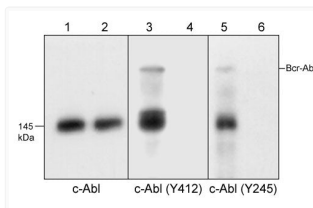
Clonality	Monoclonal
Conjugation	Unconjugated
Purification	Protein G Purified
Dilution Range	WB 1:1000
Formulation	PBS + 0.2% gelatin and 0.09% NaN ₃ .
Isotype	IgG1
Molecular Weight	145
Storage Instruction	Recommended that the undiluted antibody be aliquoted into smaller working volumes (10-30 uL/vial depending on usage) upon arrival and stored long term at -20°C C or -80°C C, while keeping a working aliquot stored at 4°C C for short term. Avoid freeze/t

TARGET INFORMATION

Gene ID	25
Gene Symbol	ABL1
UniProt ID	ABL1_HUMAN
Immunogen Region	C-Term
Immunogen Sequence	Human
Specificity	This antibody detects a 145 kDa ⁺ protein corresponding to c-Abl on SDS-PAGE immunoblots of human K-562 and HL-60 cells, and mouse ANN-1 cells.

ADDITIONAL INFORMATION

Note STRICTLY FOR FURTHER SCIENTIFIC RESEARCH USE ONLY (RUO). MUST NOT TO BE USED IN DIAGNOSTIC OR THERAPEUTIC APPLICATIONS.



Western blot K-562 cells c-Abl phosphorylation detection using antibody STJA0041050