

Anti-Beta-Tubulin 3 antibody (STJA0040643)

GENERAL INFORMATION

Product Type	Primary antibodies
Applications	IHC/ICC/WB
Host / Source	Chicken
Reactivity	Human/Mouse/Rat

PRODUCT PROPERTIES

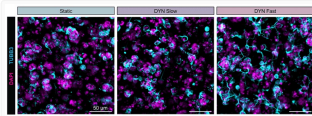
Clonality	Polyclonal
Concentration	300 µg/mL
Conjugation	Unconjugated
Purification	Affinity-Purified IgY
Dilution Range	WB 1:10000-1:20000 IHC 1:2000-1:5000 ICC 1:2000-1:5000
Formulation	Phosphate-buffered (10 mM) isotonic (0.9%, w/v) saline ("PBS, pH 7.2) with sodium azide (0.02%, w/v) added as a preservative."
Isotype	IgY
Molecular Weight	50 kDa
Storage Instruction	Store at 4°C in the dark. Under these conditions, the antibodies should have a shelf life of at least twelve months, provided they remain sterile. For longer term storage, aliquot and freeze to avoid freeze-thaw of the antibody.

TARGET INFORMATION

Gene ID	10381
Gene Symbol	TUBB3
UniProt ID	TBB3_HUMAN
Immunogen Sequence	Human, Mouse, Rat

ADDITIONAL INFORMATION

Note STRICTLY FOR FURTHER SCIENTIFIC RESEARCH USE ONLY (RUO). MUST NOT TO BE USED IN DIAGNOSTIC OR THERAPEUTIC APPLICATIONS.



ICC fluorescence hNPCs with DAPI-labeled nuclei and TUBB3 neuritic extensions using antibody STJA0040643