

Anti-Mitochondrial Import Receptor Subunit TOM20 Homolog antibody (Cyt Dom) (STJA0040640)

GENERAL INFORMATION

Product Type	Primary antibodies
Applications	ICC/IHC/WB
Host / Source	Chicken
Reactivity	Human/Mouse/Rat

PRODUCT PROPERTIES

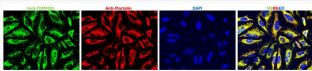
Clonality	Polyclonal
Concentration	200 µg/mL
Conjugation	Unconjugated
Purification	Affinity-Purified IgY
Dilution Range	WB Brain 1:500-1:1000 ICC 1:50-1:200
Formulation	Phosphate-buffered (10 mM) isotonic (0.9%, w/v) saline ("PBS, pH 7.2) with sodium azide (0.02%, w/v) added as a preservative."
Isotype	IgY
Molecular Weight	16 kDa
Storage Instruction	Store at 4°C in the dark. Under these conditions, the antibodies should have a shelf life of at least twelve months, provided they remain sterile. For longer term storage, aliquot and freeze to avoid freeze-thaw of the antibody.

TARGET INFORMATION

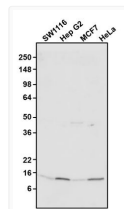
Gene ID	9804
Gene Symbol	TOMM20
UniProt ID	TOM20_HUMAN
Immunogen Region	Cyt Dom
Immunogen Sequence	Human
Specificity	No cross-reactivity reported

ADDITIONAL INFORMATION

Note STRICTLY FOR FURTHER SCIENTIFIC RESEARCH USE ONLY (RUO). MUST NOT TO BE USED IN DIAGNOSTIC OR THERAPEUTIC APPLICATIONS.



ICC staining HeLa cells using antibody mitochondrial localization with Mortalin co-stain STJA0040640



Western blot antibody detection endogenous protein at 16 kDa in cell lysates STJA0040640