

Anti-mCherry antibody (STJA0040609)

GENERAL INFORMATION

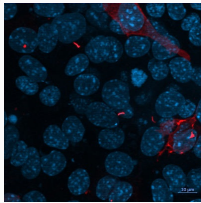
Product Type	Primary antibodies
Applications	ICC/WB
Host / Source	Chicken

PRODUCT PROPERTIES

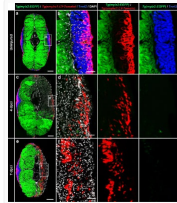
Clonality	Polyclonal
Concentration	0.2 mg/mL
Conjugation	Unconjugated
Purification	Affinity purified
Dilution Range	WB 1:500-1:1000 ICC 1:100-1:500
Formulation	Phosphate-buffered (10 mM) isotonic (0.9%, w/v) saline ("PBS, pH 7.2) with sodium azide (0.02%, w/v) added as a preservative."
Isotype	IgY
Molecular Weight	27 kDa for native monomer
Storage Instruction	Store at 4°C in the dark. Under these conditions, the antibodies should have a shelf life of at least twelve months, provided they remain sterile. For longer term storage, aliquot and freeze to avoid freeze-thaw of the antibody.

ADDITIONAL INFORMATION

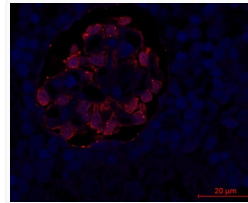
Note STRICTLY FOR FURTHER SCIENTIFIC RESEARCH USE ONLY (RUO). MUST NOT TO BE USED IN DIAGNOSTIC OR THERAPEUTIC APPLICATIONS.



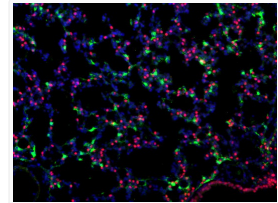
ICC staining IMCD3 cells with Anti-mCherry Antibody cytoplasmic and ciliary signals STJA0040609



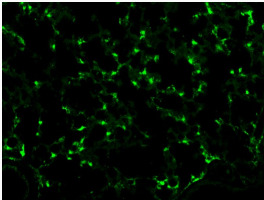
IHC staining zebrafish muscle cross section using anti-Tomato-Cherry antibody red STJA0040609



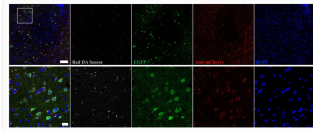
IHC staining mCherry in zebrafish kidney FFPE tissue with DAPI nuclear counterstain STJA0040609



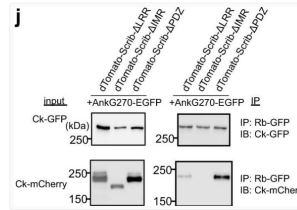
IHC staining mouse lung tissue using antibody detecting tdTomato in mesenchyme STJA0040609



IHC staining mouse lung tissue detecting tdTomato in mesenchyme using mCherry antibody STJA0040609



IF staining mouse brain NAc section using antibody dopamine sensor distribution STJA0040609



Western blot WB co-immunoprecipitation SCRIB with Ankg270 using antibody STJA0040609