

Anti-Recombinant-Rab 9 antibody [Clone 9] (STJA0040564)

GENERAL INFORMATION

Product Type	Primary antibodies
Applications	WB/IHC/ICC/IP
Host / Source	Chicken
Reactivity	Bovine/Canine/Hamster/Human/Mouse/Non-Human Primates/Rat

PRODUCT PROPERTIES

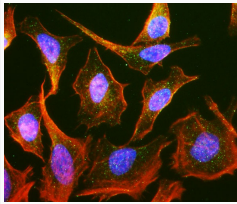
Clonality	Monoclonal
Concentration	1 mg/mL
Conjugation	Unconjugated
Purification	Purified by affinity chromatography
Dilution Range	WB 1:1000 IHC 1:50-1:200 ICC 1:50-1:200
Formulation	1X PBS, 0.05% Sodium Azide pH 7.4
Isotype	IgY
Molecular Weight	23 kDa
Storage Instruction	Aliquot and store at $\leq -20^{\circ}\text{C}$ for long term storage. For short term storage, store at 2-8 $^{\circ}\text{C}$. For maximum recovery of product, centrifuge the vial prior to removing the cap.

TARGET INFORMATION

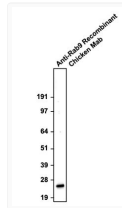
Immunogen Sequence	Canine
Specificity	No cross-reactivity reported

ADDITIONAL INFORMATION

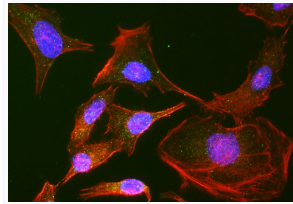
Note STRICTLY FOR FURTHER SCIENTIFIC RESEARCH USE ONLY (RUO). MUST NOT TO BE USED IN DIAGNOSTIC OR THERAPEUTIC APPLICATIONS.



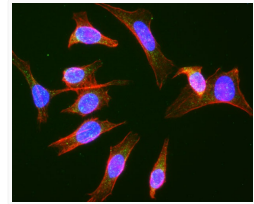
ICC staining HeLa cells with anti-Rab9 antibody late endosomes in green with DAPI STJA0040564



Western blot Rab9 chicken monoclonal antibody detection at 23 kDa in HeLa cell lysates STJA0040564



ICC staining HeLa cells with anti-Rab9 antibody late endosomes in green with DAPI stain STJA0040564



anti-Rab9 antibody ICC staining HeLa cells late endosomes in green with DAPI nuclear stain STJA0040564