

Anti-Recombinant-M6PR antibody [2G11] (STJA0040558)

GENERAL INFORMATION

Product Type	Primary antibodies
Applications	IHC/ICC/IP
Host / Source	Chicken
Reactivity	Bovine/Human/Non-Human Primates

PRODUCT PROPERTIES

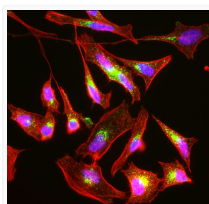
Clonality	Monoclonal
Concentration	1 mg/mL
Conjugation	Unconjugated
Purification	Purified by affinity chromatography
Dilution Range	IHC 1:100-1:500 ICC 1:100-1:500
Formulation	1X PBS, 0.05% Sodium Azide pH 7.4
Isotype	IgY
Molecular Weight	300 kDa
Storage Instruction	Aliquot and store at $\leq -20^{\circ}\text{C}$ for long term storage. For short term storage, store at 2-8°C. For maximum recovery of product, centrifuge the vial prior to removing the cap.

TARGET INFORMATION

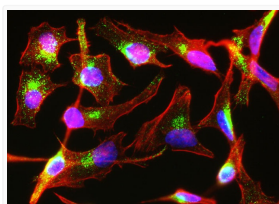
Immunogen Sequence	Bovine
Specificity	No cross-reactivity reported

ADDITIONAL INFORMATION

Note STRICTLY FOR FURTHER SCIENTIFIC RESEARCH USE ONLY (RUO). MUST NOT TO BE USED IN DIAGNOSTIC OR THERAPEUTIC APPLICATIONS.



ICC staining HeLa cells M6PR antibody in green with Phalloidin and DAPI STJA0040558



ICC staining HeLa cells with anti-M6PR antibody trans-Golgi network and endosomes STJA0040558