

Anti-Recombinant-Pink1 PTEN induced putative kinase 1 antibody (112-496 aa) [N4/15] (STJA0040410)

GENERAL INFORMATION

Product Type	Primary antibodies
Applications	WB/IHC/ICC/ELISA
Host / Source	Chicken
Reactivity	Human/Mouse/Rat

PRODUCT PROPERTIES

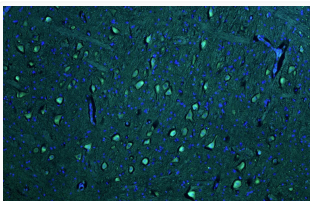
Clonality	Monoclonal
Concentration	1 mg/mL
Conjugation	Unconjugated
Purification	Purified by affinity chromatography
Dilution Range	WB Brain 1:500-1:1000 IHC 1:200-1:1000 ICC 1:200-1:1000
Formulation	1X PBS, 0.05% Sodium Azide pH 7.4
Isotype	IgY
Molecular Weight	63 kDa
Storage Instruction	Aliquot and store at $\leq -20^{\circ}\text{C}$ for long term storage. For short term storage, store at $2-8^{\circ}\text{C}$. For maximum recovery of product, centrifuge the vial prior to removing the cap.

TARGET INFORMATION

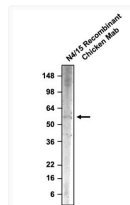
Gene ID	65018
Gene Symbol	PINK1
UniProt ID	PINK1_HUMAN
Immunogen Region	112-496 aa
Immunogen Sequence	Human
Specificity	No cross-reactivity reported

ADDITIONAL INFORMATION

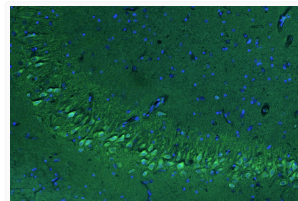
Note STRICTLY FOR FURTHER SCIENTIFIC RESEARCH USE ONLY (RUO). MUST NOT TO BE USED IN DIAGNOSTIC OR THERAPEUTIC APPLICATIONS.



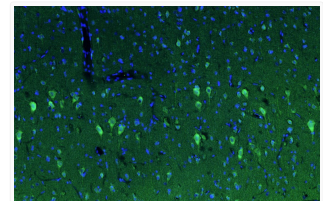
anti-PINK1 antibody IHC staining rat brain stem neurons with green fluorescence and DAPI STJA0040410



anti-PINK1 recombinant chicken mAb Western blot rat whole brain homogenate STJA0040410



anti-PINK1 antibody IHC staining rat brain hippocampus with green fluorescence and DAPI STJA0040410



anti-PINK1 antibody IHC staining rat brain cortex with green fluorescent signal and DAPI STJA0040410