

Anti-Claudin 7 antibody (100-211) [ABT441] (STJA0039120)

GENERAL INFORMATION

Product Type	Primary antibodies
Applications	IHC/ELISA
Host / Source	Mouse
Reactivity	Human/Mouse/Rat

PRODUCT PROPERTIES

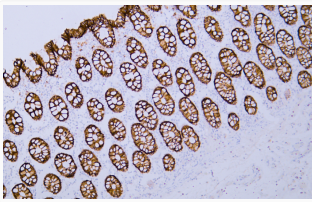
Clonality	Monoclonal
Conjugation	Unconjugated
Purification	The antibody was affinity-purified from ascites by affinity-chromatography using specific immunogen.
Dilution Range	IHC 1:200-400 ELISA 1:500-5000
Formulation	PBS, 50% glycerol, 0.05% Proclin 300, 0.05%BSA
Isotype	IgG2bk
Molecular Weight	Calculated: 22kD Observed: 22kD
Storage Instruction	Store at -20°C for up to 1 year from the date of receipt, and avoid repeat freeze-thaw cycles.

TARGET INFORMATION

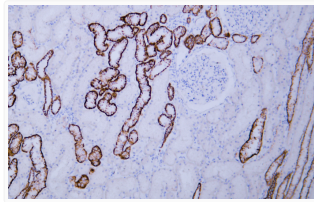
Immunogen Region	100-211
Specificity	The antibody can specifically recognize human Claudin 7 protein.

ADDITIONAL INFORMATION

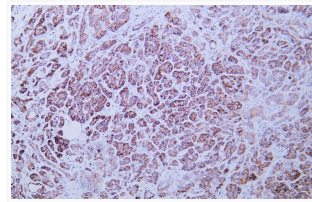
Note **STRICTLY FOR FURTHER SCIENTIFIC RESEARCH USE ONLY (RUO). MUST NOT TO BE USED IN DIAGNOSTIC OR THERAPEUTIC APPLICATIONS.**



Immunohistochemistry - Paraffin (IHC-P): Human colon tissue was stained with anti-claudin 7 (ABT441) antibody. STJA0039120



Immunohistochemistry - Paraffin (IHC-P): Human kidney tissue was stained with Anti-Claudin 7 (ABT441) antibody. STJA0039120



Immunohistochemistry - Paraffin (IHC-P): Human pancreas tissue was stained with Anti-Claudin 7 (ABT441) Antibody. STJA0039120