

Anti-Claudin 18.1 antibody (1-100) [PT0108] (STJA0039107)

GENERAL INFORMATION

| | |
|---------------|--------------------|
| Product Type | Primary antibodies |
| Applications | IHC/IF/ELISA |
| Host / Source | Mouse |
| Reactivity | Human/Mouse/Rat |

PRODUCT PROPERTIES

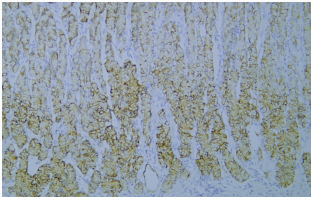
| | |
|---------------------|--|
| Clonality | Monoclonal |
| Conjugation | Unconjugated |
| Purification | The antibody was affinity-purified from ascites by affinity-chromatography using specific immunogen. |
| Dilution Range | IHC 1:200-400 IF 1:50-200 ELISA 1:500-5000 |
| Formulation | PBS, 50% glycerol, 0.05% Proclin 300, 0.05%BSA |
| Isotype | IgG1L |
| Molecular Weight | Calculated: 28kD Observed: |
| Storage Instruction | Store at-20°C for up to 1 year from the date of receipt, and avoid repeat freeze-thaw cycles. |

TARGET INFORMATION

| | |
|------------------|--|
| Immunogen Region | 1-100 |
| Specificity | This antibody detects endogenous levels of Claudin 18.1 protein. |

ADDITIONAL INFORMATION

Note **STRICTLY FOR FURTHER SCIENTIFIC RESEARCH USE ONLY (RUO). MUST NOT TO BE USED IN DIAGNOSTIC OR THERAPEUTIC APPLICATIONS.**



Immunohistochemistry - Paraffin (IHC-P): Human stomach tissue was stained with Anti-Claudin 18.1 (PT0108) Antibody. STJA0039107