

Anti-Progesterone Receptor antibody (200-300) [ABT005] (STJA0039094)

GENERAL INFORMATION

Product Type	Primary antibodies
Applications	IHC/WB/IF/ELISA
Host / Source	Mouse
Reactivity	Human/Mouse/Rat/Rabbit

PRODUCT PROPERTIES

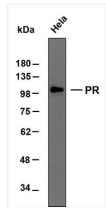
Clonality	Monoclonal
Conjugation	Unconjugated
Purification	Protein G
Dilution Range	IHC 1:100-500 WB 1:500-2000 IF 1:100-500 ELISA 1:1000-5000
Formulation	PBS, 50% glycerol, 0.05% Proclin 300, 0.05%BSA
Isotype	IgG1k
Molecular Weight	Calculated: 118kD Observed: 99kD
Storage Instruction	Store at -20°C for up to 1 year from the date of receipt, and avoid repeat freeze-thaw cycles.

TARGET INFORMATION

Immunogen Region	200-300
Specificity	The antibody can specifically recognize human PR protein, including PR-A and PR-B. In western blotting of HeLa cell lysate, there shows a 99 kDa band detected by the antibody.

ADDITIONAL INFORMATION

Note STRICTLY FOR FURTHER SCIENTIFIC RESEARCH USE ONLY (RUO). MUST NOT TO BE USED IN DIAGNOSTIC OR THERAPEUTIC APPLICATIONS.



Western Blot (WB): Whole cell lysates of HeLa were separated by 8% SDS-PAGE, and the membrane was blotted with anti-PR STJA0039094