

Anti-MAGE-C1 antibody (700-800) [ABT339] (STJA0039075)

GENERAL INFORMATION

Product Type	Primary antibodies
Applications	IHC/WB/IF/ELISA
Host / Source	Mouse
Reactivity	Human

PRODUCT PROPERTIES

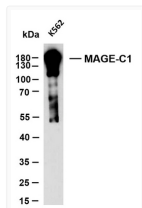
Clonality	Monoclonal
Conjugation	Unconjugated
Purification	Protein G
Dilution Range	IHC 1:200-1000 WB 1:500-2000 IF 1:100-500 ELISA 1:1000-5000
Formulation	PBS, 50% glycerol, 0.05% Proclin 300, 0.05%BSA
Isotype	IgG1k
Molecular Weight	Calculated: 124kD Observed: 180kD
Storage Instruction	Store at -20°C for up to 1 year from the date of receipt, and avoid repeat freeze-thaw cycles.

TARGET INFORMATION

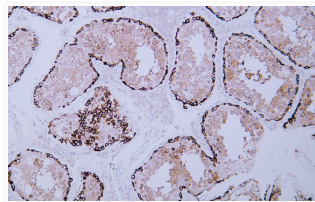
Immunogen Region	700-800
Specificity	The antibody can specifically recognize human MAGE-C1 protein. In western blotting of K562 cell lysate, the antibody can label a 190 kDa band corresponding to MAGE-C1.

ADDITIONAL INFORMATION

Note **STRICTLY FOR FURTHER SCIENTIFIC RESEARCH USE ONLY (RUO). MUST NOT TO BE USED IN DIAGNOSTIC OR THERAPEUTIC APPLICATIONS.**



Western Blot (WB): K562 whole cell lysates were separated by 10% SDS-PAGE, and the membrane was blotted with STJA0039075



Immunohistochemistry - Paraffin (IHC-P): Human testis tissue was stained with Anti-MAGE-C1 (ABT339) antibody. STJA0039075