

## Anti-CD38 antibody (200-300) [ABT-CD38] (STJA0039046)

### GENERAL INFORMATION

Product Type	Primary antibodies
Applications	IHC/WB/IF/ELISA
Host / Source	Mouse
Reactivity	Human

### PRODUCT PROPERTIES

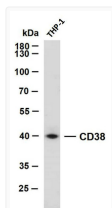
Clonality	Monoclonal
Conjugation	Unconjugated
Purification	Protein G
Dilution Range	IHC 1:200-1000 WB 1:500-2000 IF 1:100-500 ELISA 1:1000-5000
Formulation	PBS, 50% glycerol, 0.05% Proclin 300, 0.05%BSA
Isotype	IgG1k
Molecular Weight	Calculated: 34kD Observed: 40kD
Storage Instruction	Store at -20°C for up to 1 year from the date of receipt, and avoid repeat freeze-thaw cycles.

### TARGET INFORMATION

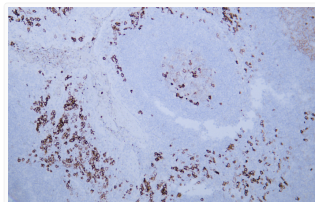
Gene ID	<a href="#">952</a>
Gene Symbol	<a href="#">CD38</a>
UniProt ID	<a href="#">CD38_HUMAN</a>
Immunogen Region	200-300
Specificity	The antibody can specifically recognize human CD38 protein.

### ADDITIONAL INFORMATION

Note **STRICTLY FOR FURTHER SCIENTIFIC RESEARCH USE ONLY (RUO). MUST NOT TO BE USED IN DIAGNOSTIC OR THERAPEUTIC APPLICATIONS.**



Western Blot (WB): THP-1 whole cell lysates were separated by 10% SDS-PAGE, and the membrane was blotted with STJA0039046



Human tonsil tissue was stained with Anti-CD38 (ABT-CD38) Antibody STJA0039046