

## Anti-GST-Pi antibody (150-210) [ABT256] (STJA0039039)

### GENERAL INFORMATION

Product Type	Primary antibodies
Applications	IHC/WB/IF/ELISA
Host / Source	Mouse
Reactivity	Human/Mouse

### PRODUCT PROPERTIES

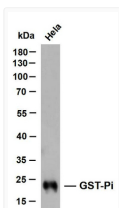
Clonality	Monoclonal
Conjugation	Unconjugated
Purification	Protein G
Dilution Range	IHC 1:200-1000 WB 1:500-2000 IF 1:100-500 ELISA 1:1000-5000
Formulation	PBS, 50% glycerol, 0.05% Proclin 300, 0.05%BSA
Isotype	IgG2bk
Molecular Weight	Calculated: 23kD Observed: 23kD
Storage Instruction	Store at -20°C for up to 1 year from the date of receipt, and avoid repeat freeze-thaw cycles.

### TARGET INFORMATION

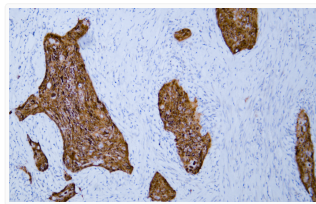
Immunogen Region	150-210
Specificity	The antibody can specifically recognize human GST-Pi protein.

### ADDITIONAL INFORMATION

Note STRICTLY FOR FURTHER SCIENTIFIC RESEARCH USE ONLY (RUO). MUST NOT TO BE USED IN DIAGNOSTIC OR THERAPEUTIC APPLICATIONS.



Western Blot (WB): HeLa whole cell lysates were separated by 10% SDS-PAGE, and the membrane was blotted with STJA0039039



Immunohistochemistry - Paraffin (IHC-P): Human esophageal squamous cell carcinoma tissue was stained with Anti-GST-Pi STJA0039039