

Anti-MDR1 antibody (600-700) [ABT252] (STJA0039038)

GENERAL INFORMATION

Product Type	Primary antibodies
Applications	IHC/WB/IF/ELISA
Host / Source	Mouse
Reactivity	Human/Mouse

PRODUCT PROPERTIES

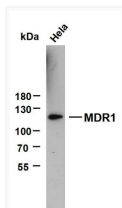
Clonality	Monoclonal
Conjugation	Unconjugated
Purification	Protein G
Dilution Range	IHC 1:200-1000 WB 1:500-2000 IF 1:100-500 ELISA 1:1000-5000
Formulation	PBS, 50% glycerol, 0.05% Proclin 300, 0.05%BSA
Isotype	IgG1k
Molecular Weight	Calculated: 141kD Observed: 120kD
Storage Instruction	Store at -20°C for up to 1 year from the date of receipt, and avoid repeat freeze-thaw cycles.

TARGET INFORMATION

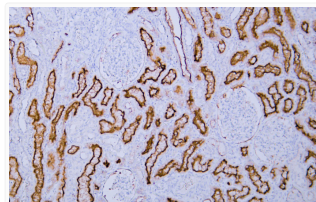
Gene ID	5243
Gene Symbol	ABCB1
UniProt ID	MDR1_HUMAN
Immunogen Region	600-700
Specificity	The antibody can specifically recognize human MDR1 protein.

ADDITIONAL INFORMATION

Note STRICTLY FOR FURTHER SCIENTIFIC RESEARCH USE ONLY (RUO). MUST NOT TO BE USED IN DIAGNOSTIC OR THERAPEUTIC APPLICATIONS.



Western Blot (WB): HeLa whole cell lysates were separated by 6% SDS-PAGE, and the membrane was blotted with anti-MDR1 STJA0039038



Immunohistochemistry - Paraffin (IHC-P): Human kidney tissue was stained with Anti-MDR1 (ABT252) Antibody. STJA0039038