

Anti-NSE antibody (300-434) [PT2281] (STJA0039016)

GENERAL INFORMATION

Product Type	Primary antibodies
Applications	IHC/WB/IF/ELISA
Host / Source	Mouse
Reactivity	Human/Mouse/Rat

PRODUCT PROPERTIES

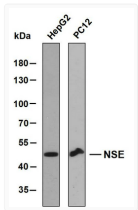
Clonality	Monoclonal
Conjugation	Unconjugated
Purification	Protein G
Dilution Range	IHC 1:200-1000 WB 1:500-2000 IF 1:100-500 ELISA 1:1000-5000
Formulation	PBS, 50% glycerol, 0.05% Proclin 300, 0.05%BSA
Isotype	IgG1k
Molecular Weight	Calculated: 47kD Observed: 47kD
Storage Instruction	Store at -20°C for up to 1 year from the date of receipt, and avoid repeat freeze-thaw cycles.

TARGET INFORMATION

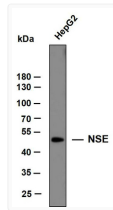
Immunogen Region	300-434
Specificity	The antibody can specifically recognize human NSE protein. In western blotting of PC-12 cell lysate, the antibody can label a 47 kDa band corresponding to NSE.

ADDITIONAL INFORMATION

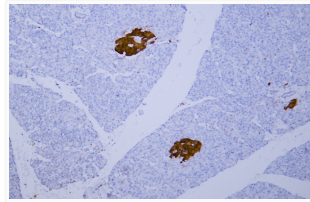
Note STRICTLY FOR FURTHER SCIENTIFIC RESEARCH USE ONLY (RUO). MUST NOT TO BE USED IN DIAGNOSTIC OR THERAPEUTIC APPLICATIONS.



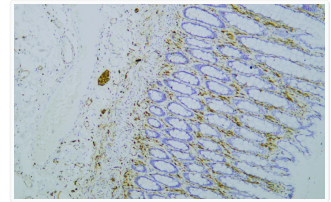
Western Blot (WB): Various whole cell lysates were separated by 8% SDS-PAGE, and the membrane was blotted with anti-NSE STJA0039016



Western Blot (WB): Whole cell lysates of HepG2 were separated by 10% SDS-PAGE, and the membrane was blotted with STJA0039016



Immunohistochemistry - Paraffin (IHC-P): Human pancreas tissue was stained with anti-Neuron-Specific Enolase (PT2281) STJA0039016



Immunohistochemistry - Paraffin (IHC-P): Human colon tissue was stained with Anti-NSE (PT2281) Antibody. STJA0039016