

Anti-Myeloperoxidase antibody (350-450) [ABT-MPO] (STJA0039013)

GENERAL INFORMATION

Product Type	Primary antibodies
Applications	IHC/WB/IF/ELISA
Host / Source	Mouse
Reactivity	Human

PRODUCT PROPERTIES

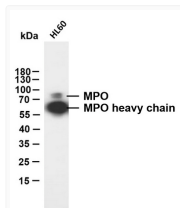
Clonality	Monoclonal
Conjugation	Unconjugated
Purification	Protein G
Dilution Range	IHC 1:200-1000 WB 1:500-2000 IF 1:100-500 ELISA 1:1000-5000
Formulation	PBS, 50% glycerol, 0.05% Proclin 300, 0.05%BSA
Isotype	IgG2ak
Molecular Weight	Calculated: 84kD Observed: 84kD, 60kD
Storage Instruction	Store at -20°C for up to 1 year from the date of receipt, and avoid repeat freeze-thaw cycles.

TARGET INFORMATION

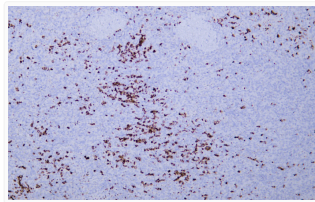
Immunogen Region	350-450
Specificity	The antibody can specifically recognize human Myeloperoxidase protein.

ADDITIONAL INFORMATION

Note **STRICTLY FOR FURTHER SCIENTIFIC RESEARCH USE ONLY (RUO). MUST NOT TO BE USED IN DIAGNOSTIC OR THERAPEUTIC APPLICATIONS.**



Western Blot (WB): HL60 whole cell lysates were separated by 12% SDS-PAGE, and the membrane was blotted with anti-MPO STJA0039013



Immunohistochemistry - Paraffin (IHC-P): Human spleen tissue was stained with Anti-Myeloperoxidase (ABT-MPO) Antibody. STJA0039013