

Anti-HSP60 antibody (500-573) [ABT186] (STJA0039008)

GENERAL INFORMATION

Product Type	Primary antibodies
Applications	IHC/WB/IF/ELISA
Host / Source	Mouse
Reactivity	Human/Mouse/Rat

PRODUCT PROPERTIES

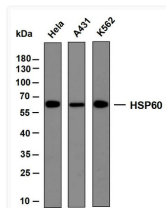
Clonality	Monoclonal
Conjugation	Unconjugated
Purification	Protein G
Dilution Range	IHC 1:200-1000 WB 1:500-2000 IF 1:100-500 ELISA 1:1000-5000
Formulation	PBS, 50% glycerol, 0.05% Proclin 300, 0.05%BSA
Isotype	IgG2bk
Molecular Weight	Calculated: 60kD Observed: 60kD
Storage Instruction	Store at -20°C for up to 1 year from the date of receipt, and avoid repeat freeze-thaw cycles.

TARGET INFORMATION

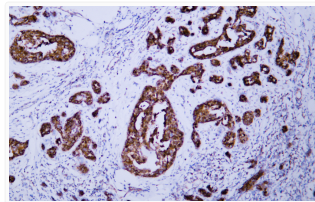
Immunogen Region	500-573
Specificity	The antibody can specifically recognize human HSP60 protein. In western blotting of K562, A431, MCF7 cell lysates, the antibody can label a 60 kDa band corresponding to HSP60.

ADDITIONAL INFORMATION

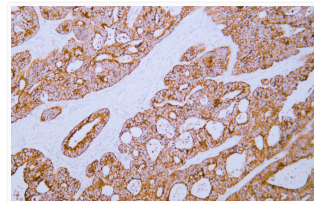
Note STRICTLY FOR FURTHER SCIENTIFIC RESEARCH USE ONLY (RUO). MUST NOT TO BE USED IN DIAGNOSTIC OR THERAPEUTIC APPLICATIONS.



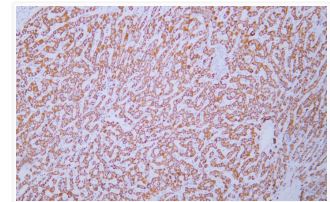
Western Blot (WB): Various whole cell lysates were separated by 10% SDS-PAGE, and the membrane was blotted with STJA0039008



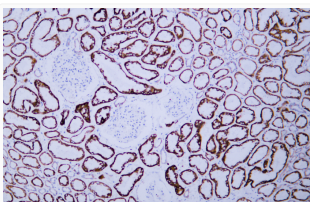
Immunohistochemistry - Paraffin (IHC-P): Human breast carcinoma tissue was stained with Anti-HSP60 (ABT186) antibody. STJA0039008



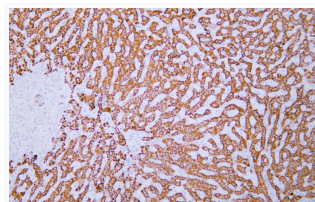
Immunohistochemistry - Paraffin (IHC-P): Human colon carcinoma tissue was stained with Anti-HSP60 (ABT186) Antibody. STJA0039008



Immunohistochemistry - Paraffin (IHC-P): Human hepatocellular carcinoma tissue was stained with Anti-HSP60 (ABT186) STJA0039008



Immunohistochemistry - Paraffin (IHC-P): Human kidney tissue was stained with anti-HSP60 (ABT186) antibody. STJA0039008



Immunohistochemistry - Paraffin (IHC-P): Human liver tissue was stained with Anti-HSP60 (ABT186) antibody. STJA0039008