

Anti-GCDFP-15 antibody (50-146) [ABT330] (STJA0039002)

GENERAL INFORMATION

Product Type	Primary antibodies
Applications	IHC/WB/IF/ELISA
Host / Source	Mouse
Reactivity	Human

PRODUCT PROPERTIES

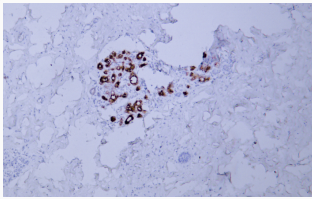
Clonality	Monoclonal
Conjugation	Unconjugated
Purification	Protein G
Dilution Range	IHC 1:200-1000 WB 1:500-2000 IF 1:100-500 ELISA 1:1000-5000
Formulation	PBS, 50% glycerol, 0.05% Proclin 300, 0.05%BSA
Isotype	IgG1k
Molecular Weight	Calculated: 17kD Observed: 15kD
Storage Instruction	Store at -20°C for up to 1 year from the date of receipt, and avoid repeat freeze-thaw cycles.

TARGET INFORMATION

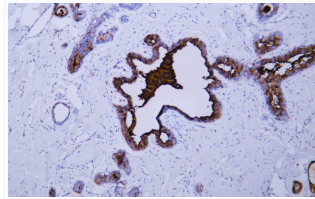
Immunogen Region	50-146
Specificity	The antibody can specifically recognize human GCDFP-15 protein.

ADDITIONAL INFORMATION

Note STRICTLY FOR FURTHER SCIENTIFIC RESEARCH USE ONLY (RUO). MUST NOT TO BE USED IN DIAGNOSTIC OR THERAPEUTIC APPLICATIONS.



Immunohistochemistry - Paraffin (IHC-P): Human breast tissue was stained with Anti-GCDFP-15 (ABT330) antibody. STJA0039002



Immunohistochemistry - Paraffin (IHC-P): Human breast carcinoma tissue was stained with Anti-GCDFP-15 (ABT330) antibody. STJA0039002