

Anti-Collagen Type I A1 antibody (1200-1464) [ABT162] (STJA0038990)

GENERAL INFORMATION

Product Type	Primary antibodies
Applications	IHC/WB/IF/ELISA
Host / Source	Mouse
Reactivity	Human/Mouse/Rat

PRODUCT PROPERTIES

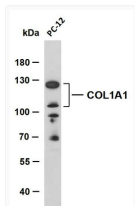
Clonality	Monoclonal
Conjugation	Unconjugated
Purification	Protein G
Dilution Range	IHC 1:200-1000 WB 1:500-2000 IF 1:100-500 ELISA 1:1000-5000
Formulation	PBS, 50% glycerol, 0.05% Proclin 300, 0.05%BSA
Isotype	IgG2bk
Molecular Weight	Observed: 125kD, 105kD
Storage Instruction	Store at -20°C for up to 1 year from the date of receipt, and avoid repeat freeze-thaw cycles.

TARGET INFORMATION

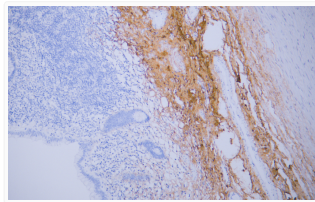
Immunogen Region	1200-1464
Specificity	The antibody can specifically recognize human Collagen Type I alpha 1 protein, can not recognize Collagen Type I alpha 2, collagen types II, III, IV and V do not respond to the antibody.

ADDITIONAL INFORMATION

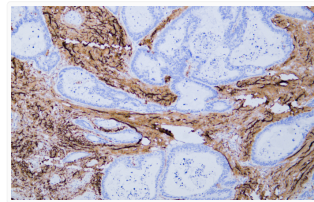
Note STRICTLY FOR FURTHER SCIENTIFIC RESEARCH USE ONLY (RUO). MUST NOT TO BE USED IN DIAGNOSTIC OR THERAPEUTIC APPLICATIONS.



Western Blot (WB): PC-12 whole cell lysates were separated by 8% SDS-PAGE, and the membrane was blotted with STJA0038990



Immunohistochemistry - Paraffin (IHC-P): Human appendix tissue was stained with Anti-Collagen Type I (ABT162) Antibody. STJA0038990



Immunohistochemistry - Paraffin (IHC-P): Human colon carcinoma tissue was stained with Anti-Collagen Type I (ABT162) STJA0038990