

## Anti-Cytokeratin 20 antibody (300-424) [ABT044] (STJA0038983)

### GENERAL INFORMATION

Product Type	Primary antibodies
Applications	IHC/WB/IF/ELISA
Host / Source	Mouse
Reactivity	Human/Mouse/Rat

### PRODUCT PROPERTIES

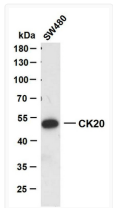
Clonality	Monoclonal
Conjugation	Unconjugated
Purification	Protein G
Dilution Range	IHC 1:200-1000 WB 1:500-2000 IF 1:100-500 ELISA 1:1000-5000
Formulation	PBS, 50% glycerol, 0.05% Proclin 300, 0.05%BSA
Isotype	IgG2bk
Molecular Weight	Calculated: 48kD Observed: 48kD
Storage Instruction	Store at -20°C for up to 1 year from the date of receipt, and avoid repeat freeze-thaw cycles.

### TARGET INFORMATION

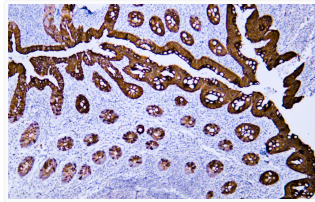
Immunogen Region	300-424
Specificity	The antibody can specifically recognize human CK20 protein, and shows no cross reaction with CK1, 5, 6, 7, 8, 13, 14, 15, 17, 18.

### ADDITIONAL INFORMATION

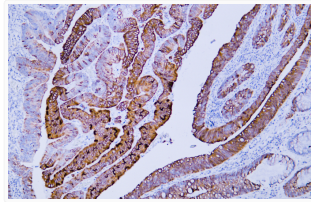
Note STRICTLY FOR FURTHER SCIENTIFIC RESEARCH USE ONLY (RUO). MUST NOT TO BE USED IN DIAGNOSTIC OR THERAPEUTIC APPLICATIONS.



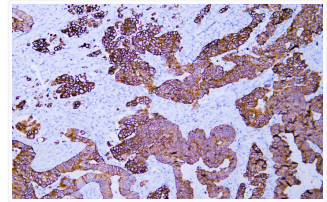
Western Blot (WB): SW480 whole cell lysates were separated by 10% SDS-PAGE, and the membrane was blotted with anti-CK20 STJA0038983



Immunohistochemistry - Paraffin (IHC-P): Human appendix tissue was stained with Anti-Cytokeratin 20 (ABT044) antibody. STJA0038983



Immunohistochemistry - Paraffin (IHC-P): Human colon carcinoma tissue was stained with Anti-Cytokeratin 20 (ABT044) STJA0038983



Immunohistochemistry - Paraffin (IHC-P): Human rectal carcinoma tissue was stained with Anti-Cytokeratin 20 (ABT044) STJA0038983