

Anti-Cytokeratin 16 antibody (400-473) [ABT059] (STJA0038978)

GENERAL INFORMATION

Product Type	Primary antibodies
Applications	IHC/WB/IF/ELISA
Host / Source	Mouse
Reactivity	Human

PRODUCT PROPERTIES

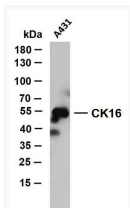
Clonality	Monoclonal
Conjugation	Unconjugated
Purification	Protein G
Dilution Range	IHC 1:200-1000 WB 1:500-2000 IF 1:100-500 ELISA 1:1000-5000
Formulation	PBS, 50% glycerol, 0.05% Proclin 300, 0.05%BSA
Isotype	IgG2bk
Molecular Weight	Calculated: 51kD Observed: 55kD
Storage Instruction	Store at -20°C for up to 1 year from the date of receipt, and avoid repeat freeze-thaw cycles.

TARGET INFORMATION

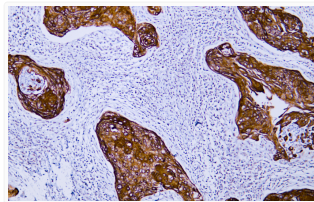
Immunogen Region	400-473
Specificity	The antibody can specifically recognize human CK16 protein, and shows no cross reaction with CK1, 5, 6, 7, 8, 10, 13, 14, 15, 19, 20.

ADDITIONAL INFORMATION

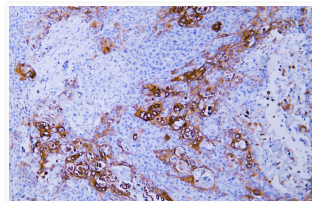
Note **STRICTLY FOR FURTHER SCIENTIFIC RESEARCH USE ONLY (RUO). MUST NOT TO BE USED IN DIAGNOSTIC OR THERAPEUTIC APPLICATIONS.**



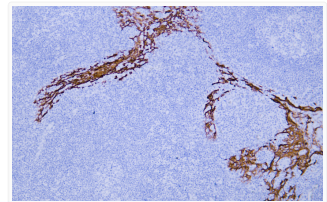
Western Blot (WB): A431 whole cell lysates were separated by 10% SDS-PAGE, and the membrane was blotted with anti-CK16 STJA0038978



Immunohistochemistry - Paraffin (IHC-P): Human cervical squamous cell carcinoma tissue was stained with STJA0038978



Immunohistochemistry - Paraffin (IHC-P): Human esophageal squamous cell carcinoma tissue was stained with STJA0038978



Immunohistochemistry - Paraffin (IHC-P): Human tonsil tissue was stained with Anti-Cytokeratin 16 (ABT059) antibody. STJA0038978