

Anti-CD8 a antibody (100-235) [ABT155] (STJA0038974)

GENERAL INFORMATION

Product Type	Primary antibodies
Applications	IHC/WB/IF/ELISA
Host / Source	Mouse
Reactivity	Human

PRODUCT PROPERTIES

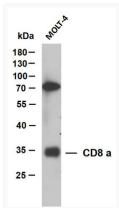
Clonality	Monoclonal
Conjugation	Unconjugated
Purification	Protein G
Dilution Range	IHC 1:200-1000 WB 1:500-2000 IF 1:100-500 ELISA 1:1000-5000
Formulation	PBS, 50% glycerol, 0.05% Proclin 300, 0.05%BSA
Isotype	IgG2ak
Molecular Weight	Calculated: 26kD Observed: 30-35kD
Storage Instruction	Store at -20°C for up to 1 year from the date of receipt, and avoid repeat freeze-thaw cycles.

TARGET INFORMATION

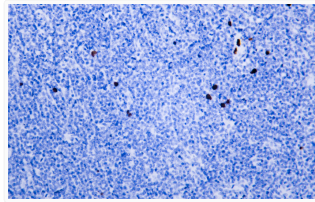
Immunogen Region	100-235
Specificity	The antibody can specifically recognize human CD8 protein, including two types of dimer: Alpha Beta heterodimer or Alpha Alpha homodimer.

ADDITIONAL INFORMATION

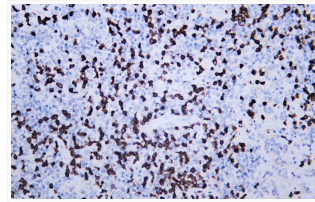
Note **STRICTLY FOR FURTHER SCIENTIFIC RESEARCH USE ONLY (RUO). MUST NOT TO BE USED IN DIAGNOSTIC OR THERAPEUTIC APPLICATIONS.**



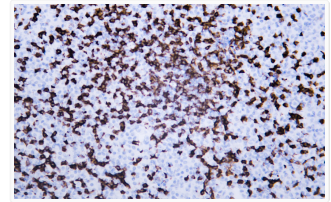
Western Blot (WB): Whole cell lysates were separated by 10% SDS-PAGE, and the membrane was blotted with anti-CD8a STJA0038974



Immunohistochemistry - Paraffin (IHC-P): Human Burkitt lymphoma tissue was stained with Anti-CD8 (ABT155) Antibody STJA0038974



Immunohistochemistry - Paraffin (IHC-P): Human lymphoma tissue was stained with Anti-CD8 (ABT155) Antibody. STJA0038974



Immunohistochemistry (IHC): Human lymphoma tissue was stained with Anti-CD8 (ABT155) antibody. STJA0038974