

Anti-PSMD11 antibody (250-350) [PTR1354] (STJA0038956)

GENERAL INFORMATION

Product Type	Primary antibodies
Applications	WB/IF/ELISA
Host / Source	Mouse
Reactivity	Human/Mouse/Rat

PRODUCT PROPERTIES

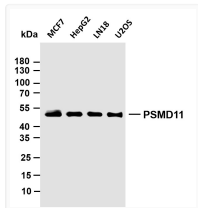
Clonality	Monoclonal
Conjugation	Unconjugated
Purification	Protein G
Dilution Range	WB 1:500-2000 IF 1:100-500 ELISA 1:1000-5000
Formulation	PBS, 50% glycerol, 0.05% Proclin 300, 0.05%BSA
Isotype	IgG3k
Molecular Weight	Calculated: 47kD Observed: 47kD
Storage Instruction	Store at -20°C for up to 1 year from the date of receipt, and avoid repeat freeze-thaw cycles.

TARGET INFORMATION

Gene ID	5717
Gene Symbol	PSMD11
UniProt ID	PSD11_HUMAN
Immunogen Region	250-350
Specificity	This antibody detects endogenous levels of PSMD11.

ADDITIONAL INFORMATION

Note STRICTLY FOR FURTHER SCIENTIFIC RESEARCH USE ONLY (RUO). MUST NOT TO BE USED IN DIAGNOSTIC OR THERAPEUTIC APPLICATIONS.



Western Blot (WB): Various whole cell lysates were separated by 10% SDS-PAGE, and the membrane was blotted with STJA0038956