

Anti-Nuclear protein antibody (200-300) [PTR1373] (STJA0038927)

GENERAL INFORMATION

Product Type	Primary antibodies
Applications	WB/IHC/IF/ELISA
Host / Source	Mouse
Reactivity	Human

PRODUCT PROPERTIES

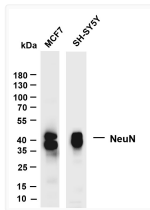
Clonality	Monoclonal
Conjugation	Unconjugated
Purification	The antibody was affinity-purified from ascites by affinity-chromatography using specific immunogen.
Dilution Range	IHC 1:200-1000 WB 1:500-2000.IF 1:100-500.ELISA 1:1000-5000.
Formulation	PBS, 50% glycerol, 0.05% Proclin 300, 0.05%BSA
Isotype	IgG2ak
Molecular Weight	Calculated: 34kD Observed: 46kD, 48kD
Storage Instruction	Store at -20°C for up to 1 year from the date of receipt, and avoid repeat freeze-thaw cycles.

TARGET INFORMATION

Immunogen Region	200-300
Specificity	This antibody detects endogenous levels of Nuclear protein (NeuN) protein.

ADDITIONAL INFORMATION

Note STRICTLY FOR FURTHER SCIENTIFIC RESEARCH USE ONLY (RUO). MUST NOT TO BE USED IN DIAGNOSTIC OR THERAPEUTIC APPLICATIONS.



Western Blot (WB): Various whole cell lysates were separated by 4%-20% SDS-PAGE, and the membrane was blotted with STJA0038927