

Anti-CD20 antibody (200-297) [ABT065] (STJA0038921)

GENERAL INFORMATION

Product Type	Primary antibodies
Applications	IHC/WB/IF/ELISA
Host / Source	Mouse
Reactivity	Human

PRODUCT PROPERTIES

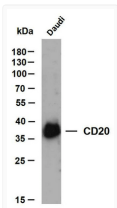
Clonality	Monoclonal
Conjugation	Unconjugated
Purification	Protein G
Dilution Range	IHC 1:200-1000 WB 1:500-2000 IF 1:100-500 ELISA 1:1000-5000
Formulation	PBS, 50% glycerol, 0.05% Proclin 300, 0.05%BSA
Isotype	IgG1k
Molecular Weight	Calculated: 33kD Observed: 35kD
Storage Instruction	Store at -20°C for up to 1 year from the date of receipt, and avoid repeat freeze-thaw cycles.

TARGET INFORMATION

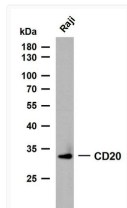
Gene ID	931
Gene Symbol	MS4A1
UniProt ID	CD20_HUMAN
Immunogen Region	200-297
Specificity	The antibody can specifically recognize human CD20 protein.

ADDITIONAL INFORMATION

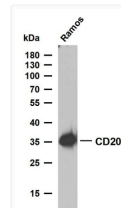
Note STRICTLY FOR FURTHER SCIENTIFIC RESEARCH USE ONLY (RUO). MUST NOT TO BE USED IN DIAGNOSTIC OR THERAPEUTIC APPLICATIONS.



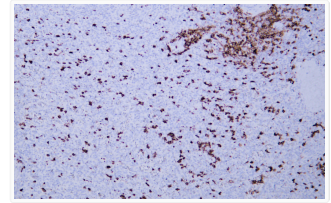
Western Blot (WB): Whole cell lysates were separated by 10% SDS-PAGE, and the membrane was blotted with anti-CD20 STJA0038921



Western Blot (WB): Raji whole cell lysates were separated by 10% SDS-PAGE, and the membrane was blotted with anti-CD20 STJA0038921



Western Blot (WB): Ramos whole cell lysates were separated by 10% SDS-PAGE, and the membrane was blotted with anti-CD20 STJA0038921



Immunohistochemistry - Paraffin (IHC-P): Human spleen tissue was stained with anti-CD20 (ABT065) antibody. STJA0038921