

## Anti-CD163 antibody (1-100) [ABT-CD163] (STJA0038915)

### GENERAL INFORMATION

Product Type	Primary antibodies
Applications	IHC/WB/IF/ELISA
Host / Source	Mouse
Reactivity	Human

### PRODUCT PROPERTIES

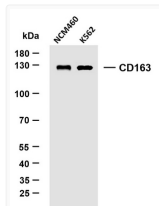
Clonality	Monoclonal
Conjugation	Unconjugated
Purification	Protein G
Dilution Range	IHC 1:200-1000 WB 1:500-2000 IF 1:100-500 ELISA 1:1000-5000
Formulation	PBS, 50% glycerol, 0.05% Proclin 300, 0.05%BSA
Isotype	IgG1k
Molecular Weight	Calculated: 125kD Observed: 125kD
Storage Instruction	Store at -20°C for up to 1 year from the date of receipt, and avoid repeat freeze-thaw cycles.

### TARGET INFORMATION

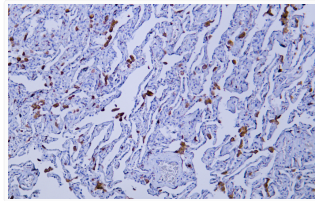
Gene ID	<a href="#">9332</a>
Gene Symbol	<a href="#">CD163</a>
UniProt ID	<a href="#">C163A_HUMAN</a>
Immunogen Region	1-100
Specificity	The antibody can specifically recognize human CD163 protein.

### ADDITIONAL INFORMATION

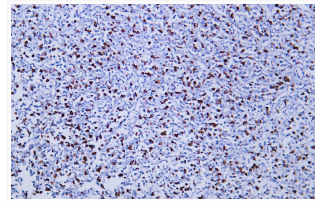
Note STRICTLY FOR FURTHER SCIENTIFIC RESEARCH USE ONLY (RUO). MUST NOT TO BE USED IN DIAGNOSTIC OR THERAPEUTIC APPLICATIONS.



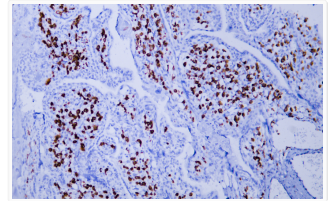
Western Blot (WB): Various whole cell lysates were separated by 10% SDS-PAGE, and the membrane was blotted with STJA0038915



Immunohistochemistry - Paraffin (IHC-P): Human lung tissue was stained with anti-CD163 (ABT-CD163) antibody. STJA0038915



Immunohistochemistry - Paraffin (IHC-P): Human malignant fibrous histiocytoma tissue was stained with anti-CD163 STJA0038915



Immunohistochemistry - Paraffin (IHC-P): Human placenta tissue was stained with anti-CD163 (ABT-CD163) antibody. STJA0038915