

Anti-CD105 antibody (400-500) [ABT-CD105] (STJA0038910)

GENERAL INFORMATION

| | |
|---------------|--------------------|
| Product Type | Primary antibodies |
| Applications | IHC/WB/IF/ELISA |
| Host / Source | Mouse |
| Reactivity | Human |

PRODUCT PROPERTIES

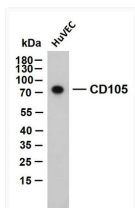
| | |
|---------------------|--|
| Clonality | Monoclonal |
| Conjugation | Unconjugated |
| Purification | Protein G |
| Dilution Range | IHC 1:200-1000 WB 1:500-2000 IF 1:100-500 ELISA 1:1000-5000 |
| Formulation | PBS, 50% glycerol, 0.05% Proclin 300, 0.05%BSA |
| Isotype | IgG2ak |
| Molecular Weight | Calculated: 70kD Observed: 75kD |
| Storage Instruction | Store at -20°C for up to 1 year from the date of receipt, and avoid repeat freeze-thaw cycles. |

TARGET INFORMATION

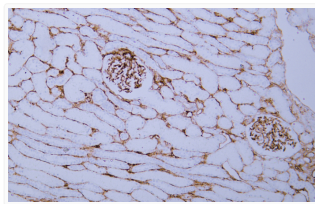
| | |
|------------------|--|
| Immunogen Region | 400-500 |
| Specificity | The antibody can specifically recognize human CD105 protein. |

ADDITIONAL INFORMATION

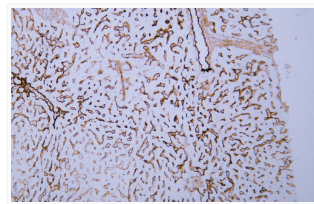
Note STRICTLY FOR FURTHER SCIENTIFIC RESEARCH USE ONLY (RUO). MUST NOT TO BE USED IN DIAGNOSTIC OR THERAPEUTIC APPLICATIONS.



Western Blot (WB): HuVEC whole cell lysates were separated by 10% SDS-PAGE, and the membrane was blotted with STJA0038910



Immunohistochemistry - Paraffin (IHC-P): Human kidney tissue was stained with anti-CD105 (ABT-CD105) antibody. STJA0038910



Immunohistochemistry - Paraffin (IHC-P): Human liver tissue was stained with anti-CD105 (ABT-CD105) antibody. STJA0038910